



February 2019

## Recon

Masscar Model Exposition 2019 – March 17, 2019,  
Holiday Inn Taunton Exit 9 off 495S, Taunton, MA  
Contact Stu Marcus at 603-382-9724 or  
[marcus\\_stuart@yahoo.com](mailto:marcus_stuart@yahoo.com)

Valleycon 29 – March 31, 2019 Knights of Columbus  
460 Granby Road, Chicopee, MA Contact Al LaFleche  
413-306-1270 or [ajlafleche@comcast.net](mailto:ajlafleche@comcast.net)

Downeastcon 2019 April 7, 2019, Thornton Academy,  
438 Main St., Saco, ME Contact George Bangs, 207-  
625-8007 or [smsmdowneastcon@gmail.com](mailto:smsmdowneastcon@gmail.com)

Noreastcon 2019 – April 12-13, 2019, Holiday Inn  
Express 400 Old Loudon Rd, Latham, NY Contact  
[WWW.IPMSNENY.ORG](http://WWW.IPMSNENY.ORG)

IPMS Nationals 2019 Model Show Aug 7-10, 2019,  
Chattanooga Convention Center Contact  
[www.ipmsusanationals.com](http://www.ipmsusanationals.com)

Northeast Connecticut Model Car & Truck Show –  
Sept 22, 2019 Knights of Columbus, 1017 Riverside  
Drive, North Grosvenordale, CT Contact  
[spitfirejim5161@gmail.com](mailto:spitfirejim5161@gmail.com)

Granitecon XXVII – Oct 20, 2019 Falls Event Center,  
21 Front Street, Manchester, NH Contact  
[www.granitestatemodelersclub.org](http://www.granitestatemodelersclub.org)

## Inside

1

From the Bridge	2-5
Challenge Question	5
February Meeting Notice	6
Documentary Review	6
Modelling on the Cheap	7
Kit Review	8-9
Up Scope	9-10
Hobby Shops	11
In Range	12

## 2018-2019 Dues

If you have not already done so, please renew your  
dues for the coming 2018-2019 membership year.  
Dues are still \$10.

Please remit your dues to John Nickerson at the  
meeting or send it to him at 18 Stone Street,  
Middleboro, MA 02346 .

Don't forget to ask for the Family Membership if you  
have sons or daughters as members in the club as well.

## **FROM THE BRIDGE**

### **The President's Column**

We are now officially, in our 50th (2018 – 2019) membership year. The membership fee is still only \$10 per year and we accept advanced payment if you wish to get ahead on your membership. There is also a family membership plan. You can catch me at a meeting or send your payments to me by mail, checks to be made payable to Bay Colony Historical Modelers.

The 50<sup>th</sup> Anniversary tee shirts are in and have been a hit. We only have a few left in L and XL. They are medium blue and have the club log on the left front, and on the back it says "Just Glue It".

We have received our Re-Charter Package. Unfortunately, there is no "active" fact sheet for our club. I have been sent a blank fact sheet to fill in. So we are in the process of updating our club records. We will get this sent in ASAP. Hopefully before the end of January.

Speaking of January, the January meeting was held at the American Legion Hall, Post 217, in Plainville, MA. This location was selected because Bob was in the right place at the right time and made contact. There is a small parking lot out front. It made more sense to lock it up and announce it, then hunt around for a better deal and lose it. It cost us \$150 for the afternoon. We are going to search for a couple cheaper venues, (read as free), to serve as backups for these emergency situations. (No one had volunteered to host the January meeting.) Please understand that we have lost three meeting locations over the past year. Bill Collins would host two. (He would prefer to host than travel.) And the meeting that Hal Marshman, Peter Jardim, and Joe Ravino would host at the Shea Naval Air Museum is up in the air due to the space being unavailable. (The fate of the Shea Naval Air Museum is also up in the air. No pun intended.) We asked that members that don't usually host a meeting bring something for the food table. Let me state that they did an outstanding job. Thanks guys.

And speaking of meetings, we received notice the morning of the January meeting, that Brian Messier had a conflict in his schedule and would not be available to host the February meeting at the fire station. I have decided to take on the February meeting, with the following caveat, no meeting if there are snow banks. You will have to watch the forum and the Facebook page for updates. One possible solution; there is a convenience store at the Carver end of my street. Members could park there and be shuttled in. It's just over a mile from my house.

We have been contacted by Hal Marshman Jr. He is a member of a car club. (Read as full size, 1 to 1 builders.) He has issued a challenge to members of his club and some other car clubs to build car models. He spoke to me about this prior to our show, while it was in the planning stages. He is looking for some people from our club to judge the models. The event will be held at Independence Mall / Kingston Collection, in Kingston, MA, Sunday, March 10<sup>th</sup>, 12 to 5. Judging will take place between 1 to 4pm. Please let me know if you are willing to help out.

Ok, back to club shirts. I had started a new poll on the forum. We had a tie on the previous poll for a new shirt color, due to the fact that our old, blue collar off-white polos are no longer available. The poll was to break a tie between black and navy blue. This poll will be closed early. We had such a good turnout at the January meeting that membership asked to vote on it. Black won. There will be a sign up on the forum for those that want to order a black "50<sup>th</sup> Anniversary" shirt. If we hit a minimum of 12 we will order those before we order the standard logo. If you are not on the forum you can contact me thru another channel. I need a name and shirt size. I do not know the exact price of the shirt at this moment. Quantity may affect the cost as well as size. Some of the larger sizes cost slightly more. The price will be in the \$20 range.

At the December meeting we voted to do away with the Entrants Favorite award at our show. Evidently the entrants are no longer interested in spending time choosing a model to vote for. The number of ballots cast has dwindled over the years. I suspect that most of the modelers that cast a ballot, voted for themselves. This year we had seven ballots cast, all for different models. The award cost us \$35. In the past we would receive a large number of ballots. There would be 15 to 20 models receiving mention, many would receive 2 to 3 votes each. Usually the winner would win by just one vote. The largest difference in votes that I can remember goes back to Bill Pritchard and his scratch built Red Dragon. He won by 5 votes. (He may have had a total of 15. Times change.)

Another item discussed at the December meeting was the 1/32 scale Aircraft categories. We have had one 1/32 Aircraft category for many years. Because of the number of entries we were receiving we split it into two categories, about five years ago. Props and Jets. We had about one good year and then the numbers dropped off. We were receiving two to three entries in one category and one in the other for the last couple years. I proposed that we return to one 1/32 scale category. It was decided that we continue with the two for another year and then make a decision after next year's show.

New to this issue, (I hope), is the Challenge Question. You should find it elsewhere in this issue. The questions will be simple. You just send your answers into Bob and they will be printed in a following issue. To kick it off there are two questions. You can answer either or both. There will be a small prize at the end of the year based on the number of questions answered or the creativity of the answers. All decisions of the editorial staff are final.

Next up, the stolen figure. As an IPMS chapter our show is covered under the IPMS insurance program. We filed a claim against the IPMS insurance for the value of the figure, \$300. There was some back and forth. They accepted the value of the figure. We never received a direct answer from the insurance company as to whether the theft of a figure was covered. We did find out that the deductible of the policy is \$500. So the point is moot. End of story. I requested that the Region 1 coordinator provide that information to the Region 1 clubs, and he has done that.

Your board met on Jan. 12. A number of items were discussed. Those that are most important to you are the replacement of meeting locations, as mentioned above, and security at our show. We are

trying to locate a couple meeting places that we can use as backup or on an emergency basis. If you know of any small halls that may be rentable, please let us know. Our requirements are that it should be able to hold about 20 people. Being able to set up 4 tables is good, (two to sit around, one for food/beverages, and one for models), a parking lot, (to get us off the street for winter parking), is a plus. We are willing to pay a fee or make a donation, the cheaper the better.

As far as show security goes, we discussed getting high visibility vests, and have them marked STAFF. Members that are working the show would wear them, hopefully making it easy for visitors to locate us for the purpose of asking questions and as a deterrent to people that might want to remove items from the tables that don't belong to them. We would have a person on duty near the front door, asking to inspect packages leaving the hall, and possibly one in the figure aisle, hopefully acting as a deterrent to a repeat of last year.

Brick airplanes? I received an email from Kalmbach Publishing, the people that bring us Fine Scale Modeler. They are offering a book. *"How to Build Brick Airplanes" by Peter Blackert*. Chapter one is *Selecting the Correct Lightweight Aggregate for Your Mortar*. No, just joking. The book is 192 pages and includes instructions for building a number of aircraft from the infamous Lego Bricks. It also includes the part numbers required to build the aircraft pictured inside. Amongst the numerous, and famous, aircraft included within those pages are the Albatros D.Va, SR-71, P-38 and B-2 bomber. A lot of people blame electronic games for diverting kids from discovering modeling. I've been blaming Lego for a long time. Any kid that may be prone to following instructions and assembling parts, tends to get hooked into Legos at an early age. They tend to be parent approved because the kids don't need to handle toxic materials. And kids like them because they can be taken apart and rebuilt, over and over.

It's been a while since I've discussed Airfix. They have announced their 2019 Range. Having made their return, a number of years back, with a bunch of New Tools they have slowed down on their new tools more recently. They have taken to re-releasing their new tools with new decals and calling them new. Much of what is listed as new are just the new box art and new decals. There are some exceptions. Their 'big' new announcement is their new 1/35 armor line. Up until now, there 'armor' kits have been 1/32, and a few 1/48 'new tools', mostly modern British Middle East equipment, or 1/76. Their new line is promising about sixteen new WW2 vehicles, this year. This is being done as a partnership with someone else. So the kits aren't new but the boxing and decals will be. We are promised a M3 Stuart 'Honey' in February. The 16 new kits aren't all different vehicles. Four of them are Tiger I's. The line also promises a US tractor, Panther V, M10, and M36. The catalog also lists the recently released 1/24 F6F-5. There are four 'new tools'; in 1/48 there is the Blackburn Buccaneer S. Mk. 2, D.H. 82a Tiger Moth, and P-51D without fillets, and in 1/72 the MiG 17F. There are more kits being announced as new that were new tools with additional new parts. These include the 1/48 Hawker Hunter, and in 1/72, Me 262, B-25B Doolittle Raider, and Wellington Mk. VIII. And last on the list is the announcement of the expansion of their 'Classic' range. They are bringing back some of their

old kits that haven't been produced in a number of years, including the 1/72 Bristol Bulldog and P-61 Black Widow.

Fine Scale has a review on their web site of Bronco Models new 1/35 M19A1. It will also appear in the March Issue. This is the first time this vehicle has appeared in plastic. The US Army was developing a twin 40mm Bofors AA mount on an M5 chassis when production was stopped on the M5. It was decided to mount it on a modified M24 Chaffee chassis instead. I don't believe any saw service in WW2 but it was widely used in Korea. The build in the kit review looks fantastic, but relays that it is not an easy build. With a MSRP of \$75, it's not cheap, but it is on par with many other recent armor releases. With 1,491 parts in the box, 51 PE, (yes, 1,491), it puts another perspective on the price tag. That's 5 cents per part. Check it out.

Historical Note: The Swedish designed and built 40mm Bofors gun was so successful that it was license built in the USA, Canada, England, and Germany during WW2. The twin mount was light enough to be towed. In the US, it was installed in fixed batteries, sent to war on the bed of GMC trucks and almost every US ship built during WW2 had twin or quad 40mm Bofors mounts. The quad mounts being dual twins.

Happy 50th. *Party, karamu, fiesta.....*

God bless America! Pray for our servicemen overseas.

Happy modeling and give kits to kids!

John J. Nickerson

[bchmaprez@verizon.net](mailto:bchmaprez@verizon.net)

## **Challenge Question,,,**

We are going to try to start something new, the Challenge Question. Each issue of the Battlewagon will have a new challenge question. You will find the question posted here. To accept the challenge, write a sentence, or up to a paragraph answer, and submit it to Bob at [treadhead@comcast.net](mailto:treadhead@comcast.net) . Or, submit a question for the challenge question. Make sure you sign or put your name on the answer.

To start it off there are two questions. You can answer either or both.

Question one is multi-part. ***What was the first kit you remember building, did you paint it, and with what?***

Question two is... ***Which kit would you build again, if...?***

This could be ... *if the mold was ever found. ...if the price falls below \$100. ...if they packaged it with decent decals. ...if they made an instruction sheet in English.* I think by now you get the drift. Maybe we will offer a prize at the end of the year for the most entries published, or the best entries, etc.

John Nickerson

## NOTICE - FEBRUARY 8<sup>th</sup> MEETING LOCATION CHANGE

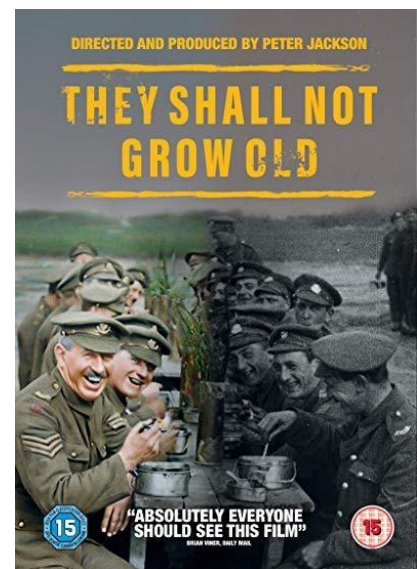
All, our February Meeting will be located at John Nickerson's House in Middleboro, MA rather than the Fairhaven Fire Station. See website calendar for directions. Same time, second Saturday of the month from 12-4.

## Documentary Review – They Shall Not Grow Old

By Robert Magina

My wife and I went to see the limited screening of this new documentary last December. It was a good thing we bought our tickets on line \$14.00 per ticket. The two screenings were sold out.

This documentary is made up of original WWI films some 100 years old now. These films came from the Imperial War Museum. Also used were recorded interviews made many years ago of British Commonwealth veterans. The documentary was made by Peter Jackson. He used some serious state of the art technology on this documentary. Films are not only colorized but sound has been added as well and voices to a number of soldiers.



Great just does not do this film justice. You feel like you are in the trenches with the soldiers, living and fighting as they did. Peter did everything nuance to the nines. I think one of the best parts is his commentary after the credits on what and how they utilized and updated the 100 year old films. This alone admission.

I understand that they are now doing more screenings, limited of course. Check on the web to see when and where. Don't miss this one.

## **Modeling on the Cheap**

**By Del Stator**

Need some lumber for your diorama, to be part of the rubble, or maybe part of the load for your pickup truck? Cheap fix...

Instead of going to your local hobby shop and buying bass wood or balsa strips and cutting them up, go to your local supermarket and go to the coffee aisle or cooking utensil aisle. (Although not overly expensive, this approach is cheaper.) Look carefully and you will find wooden coffee stirrers. Usually in a blister pack. There are usually a number of them in a blister pack. If building a bombed out structure, they will burn easily to give them that blown up, charred look, easily.

If you need scale lumber to represent structural components, such as 2 x 4's or floor joists, etc. The bass wood or balsa still works best. The stirrers are quite thin, but they work well as clapboards on the outside of your structure.

One of the tools, if you will, that I use for cleaning paint brushes, is a newsprint block. Instead of buying a block at an art supply store, I make my own.

Take a section of newspaper, fold it over a couple times. Along an open edge, (not the binding edge), use a heavy duty stapler to clamp the pages together. You can use a binder clip instead if you wish. Cut the clamped area out as a 4" x 4" or up to 6" x 6" block, and you're done.

I wipe excess paint out of a brush on it. I wipe out the thinner / solvent / cleaning solution filled brush on it until the brush is dry. You can fold the upper sheet(s) out of the way until they dry, or if full of paint you can tear it off and throw away. You can also flip your block over and use both sides of the sheet.

Stay cheap my friends.

P-47 Thunderbolt by Peter Jardim





### **In the Box Review:**

#### ***IBG Models PZL 23B Karas Polish Light Bomber (Early) 1/72 scale, (72506)***

This is an ugly little airplane from very early in World War 2 that was flown by the Polish Air Force. I know nothing about this aircraft, beyond that it's powered by a single radial engine. Wikipedia tells me it was designed in the mid-1930's to fill the light bomber and armed reconnaissance role. My first impression of this kit, when I opened the box, is that this is a little gem. IBG produces models in Poland, hence the subject, and their reputation as model makers keeps getting better.

The box is a two part lid / base construction, (11 ¾" x 8" x 1 ¾"). The cover art work is art work featuring the plane in the kit. The end panels feature the cover art, and the side panels, profiles of the kit model and other IBG aircraft kits available. I found no skill level listed, but there is a note on the side panel that the kit is "Not suitable for children under 14 years".

Looking in the box, the kit is composed of a booklet style, color and black on white instruction sheet, a decal sheet printed by Techmod, a sheet of etched brass (packaged together), and three plastic bags of plastic parts. One bag is single sprue of clear plastic parts. The parts look very clear and very sharply cast. The rest of the parts are cast in medium – dark grey plastic. All look crisply cast. I have been under the opinion that IBG was a limited run kit producer. One of the hallmarks of limited run kits is the thick gates connecting to the parts. (A gate is the stub of plastic that extends from the sprue to the kit part, many times, thicker than the part is, requiring a lot of cleanup.) The gates on this kit are very petite, rivaling or exceeding those of many mass kit producers. I noticed very little flash, if any. I didn't notice any ejector pin marks on any exposed surfaces. The clear parts are very clear and well-cast.

The etched brass is brass in color. I saw no indication of pre-painted parts.

The instruction sheet is a booklet type and is a full 'A' size, (European format larger than 8 ½ x 11), composed of eight pages. It's printed in Polish and English. The cover page is printed in color and shows the box art, an explanation of the grey triangles used throughout the instructions, color image of the decal sheet and photo etched parts, and a the paint spreadsheet. There are six colors on the spreadsheet and they are listed against Vallejo Model Air, Hataka, Life Color, Mr Hobby, and AK Interactive paints.

The interior pages are printed in grey tones with computer graphic 3D images, with thin black line arrows showing where the parts go. Page 2 shows the sprue layout. Page 3 shows assemble steps 1 through 3. Includes interior components and wing assembly. Page 4 has steps 4 through 6, which include installing the interior parts within the right fuselage half and joining the fuselage halves. Page 5 includes steps 7 through 10, installing the wings and engine, detailing the lower bay, and assembling the wheels and pants. Page 6 shows steps 11 and 12, final assembly and adding the ordinance. Page 7 shows two views of the assembled model. The last page shows five views of the aircraft in color and full decals.

The decals are for one scheme only, an aircraft from the 12th Reconnaissance Squadron, 1<sup>st</sup> Air Rgmt. It is a 'Polish Khaki' over light blue-grey scheme.





My general opinion of this kit is very good. It does require a skilled builder, it's not for a beginner. I'll estimate it as a skill level 3, to do a decent job. IBG does produce an A version of this aircraft. I don't know what the difference is, between them. I purchased this kit for about \$23 from a hobby shop, in August 2018. I'm giving this kit a rating on the Del Scale of 4.5 thumbs up out of 5. I'm looking forward to starting this project.

John Nickerson

Up Scope	
Feb 8 <sup>th</sup> Meeting	Mar 16 <sup>th</sup> Meeting
John Nickerson 18 Stone Street Middleborough, MA 02346 508-947-7939	Robert Magina 71 Willow Lane Plainville, MA 02762 508-641-5873
<p>Directions</p> <p>From the west: Rte. 495 South to the Rte. 44 East &amp; West (Plymouth / Taunton) exit. Go right at the top of the ramp, East, toward Plymouth. Go half way around the rotary and continue east on Rte. 44. Take the Rte. 58 exit and go right, South towards Carver, through two sets of lights, at the top of the rise, in front of Quickeez, take a right on to Forest, then first right onto Fuller. Thru the cranberry bogs, at the town line Fuller becomes Stone, and in about ½ mile you will see the intermediate blue raised ranch on your right.</p> <p>From the east/Rte. 3: Take Rte 44 East to the third exit, Rte 58, Carver / Plympton; at the bottom of the ramp go left, South. (Follow the directions above.)</p> <p>From downtown Middleboro: Follow Rte. 105 north, right on Plymouth St., bear right onto Wall St., 4th left onto Stone, 6th house on the left.</p>	<p>Directions</p> <p>Take 95N to 495N. Take exit 14B (Rte 1 – North Attleboro). Go through the lights, heading towards North Attleboro on Rte 1. ( Pass Lowes at lights) Go to next light, intersection of Rte 106 and Rte 1 – go right onto Rte 106 towards Plainville center. (Convenience Store at lights). Go to bottom of hill at the light take a right onto Rte 1A. Go past the Plainville Police and Fire on your right. Take right onto Sharlene Lane – Willow Lane is the first right – I am on the corner of Willow Lane and Maple Terrace – #71 Look for my RAV-4 in the driveway – I would like to ask everyone to please park along Sharlene Lane and walk down Willow Lane to my Condo – I am very close to Sharlene Lane. Thank you for parking there and making the short walk.</p> <p><b><u>NOTE THIS MEETING IS A WEEK LATER THAN NORMAL DUE TO A SCHEDULE CONFLICT</u></b></p>

# Battlewagon

Page 10

## Apr 13<sup>th</sup> Meeting

Gil Costa  
513 Bullock Street  
Fall River, MA 02720  
774-451-3236

### Directions

From points north: Take Rt. 24 south to “Eastern Ave./President Ave.” exit; continue to rotary and take second right off same. You will now be on North Eastern Ave. Continue on through one set of lights until the next break in the roadway island, this will be Bullock St.. Take a left and continue to #513 which is on the right and is a gray stucco house with tan trim.

From points West: Take Rt. #195 east to Rt. #24 north. Take the “Eastern Ave./President Ave” exit. Continue via above directions.

Space Craft by John Gisetto Sr.



Jagdpanzer IV by Steve Kwasny



Kubelwagen by Chris Macleod



## THE SPARE TIME SHOP

Models, Hobbies, Games, Rockets, Trains,  
Books, Magazines, Decals, Resin, Photo-Etch,  
Slot Racing, Science, Die-Cast, Paints, Tools

222J East Main St., Post Road Plaza, Rte.20E  
Marlboro, Massachusetts. 01752

OWNERS **Our 36th Year** OPEN 7 DAYS  
Paul and Theresa M-W 11-6; Th-F 11-8  
Scopetski **SAVE THIS** Sat 10-6; Sun 12-5  
**CARD**

Phone: (508) 481-5786 eMail: [ski@sparetimeshop.com](mailto:ski@sparetimeshop.com)  
Fax: (508) 229-2592 <http://www.sparetimeshop.com>



## Harry's Hobbies & Collectables

250 East Main Street (Rte. 495 Marketplace)

Norton, MA. 02766

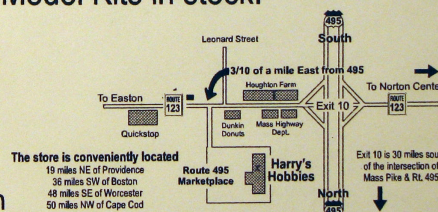
Behind the Dunkin' Donuts

**Phone 508-285-8080 Cell: 508-241-2155**

*Specializing in :* Model Kits & Vintage Non-Sport Trading Cards  
Paints, Glues, Tools, & Supplies, for Scratchbuilders.  
Armor, Ships, Planes, Cars, and Trucks.  
over 4000 Model Kits in stock.

Hours :  
Tues. - Thurs. 11-7 pm  
Fri. 11-8 pm  
Sat. 10-5 pm

[www.mymummy.com](http://www.mymummy.com)  
Email: [mummy@mymummy.com](mailto:mummy@mymummy.com)



## In Range

<b>Dec 8<sup>th</sup> Meeting</b> – Chris Libucha	<b>Jan 19<sup>th</sup> Meeting</b> – Plainville Legion Hall
1/35th VW Typ 87 – Bob Magina 1/35th Jagdpanther G1 (WIP) – Steve Kwasny 1/35th Merkava Mk 3D (WIP) – Steve Kwasny 1/35th Jagdpanzer IV (WIP) – Steve Kwasny 1/48th S-2 Tracker Joe Ravino 1/48th T-33 – Joe Ravino 1/48th P-47 Thunderbolt – Peter Jardim 1/?th Viper on Launch Rails – John Gisetto Sr. 1/?th Space Craft – John Gisetto Sr.	1/48th Handley Page Halifax Mk III (WIP) – Paul Williams 1/48th F-4J – Joe Ravino 1/48th P-51 Mustang – Pete Smey 1/48th F-14A (WIP) – Pete Smey 120mm US Soldier ETO 1944 – Ray Rosario
<b>In Attendance:</b> Paul Champigny                      John Merryman Kevin Colburn                        Bob Don John Nickerson                       Bob Magina Peter Jardim                           Joe Russum Gian Montecalvo                    Steve Kwasny Warren April                          Craig Magina Chris Libucha                        Ted Bunn Terry Sumner                        Joe Ravino John Gisetto Sr.                      Pat McColgen Peter Smey	<b>In Attendance:</b> Bob Magina                           Peter Smey Ray Rosario                           John Nickerson Paul Williams                        John Merryman Joe Ravino                            Gian Montecalvo Ted Bunn                             Paul Champigny Kevin Colburn                        Talal Chouman Norm Robbie                        Eric Peterson Peter Jardim                         Mike McNamara John Gisetto Sr.                      Alex Korovkine
<b>Raffle:</b>  <p style="text-align: center;">Something for everyone Merry Christmas</p>	<b>Raffle:</b> 1/48th TBM-3 – Joe Ravino Tamiya Glue – John Gisetto Sr. Flexpad – Paul Champigny



IPMS Bay Colony Modelers meet the second Saturday of each month from 1:00 to 4:00 PM. The meetings take place at selected members houses. Look at the Battlewagon or the club website for location and directions. Guests are always welcome. Membership is \$10.00 per year. Members and guests are encouraged to bring completed models or works in progress for display and discussion.

The Battlewagon is published six times per year. All opinions expressed are those of the authors and do not necessarily reflect IPMS Bay Colony or IPMS USA views. Submissions relevant to modeling are welcome, and may be published at the discretion of the editor. All material is subject to editing. There is no payment for articles.

## IPMS Bay Colony Historical Modelers

71 Willow Lane  
Plainville, MA 02762

phone: (508)-695-7754  
e-mail: [treadhead@comcast.net](mailto:treadhead@comcast.net)  
web: [www.ipmsbaycolony.com](http://www.ipmsbaycolony.com)



## 2018 - 2019 Club Dues

If you have not already done so, please renew your dues for the coming 2018-2019 membership year. Dues are still \$10. Please remit your dues to John Nickerson at a meeting or send it to him at 18 Stone Street, Middleboro, MA 02346

### IPMS/USA MEMBERSHIP FORM

IPMS No.: \_\_\_\_\_ Name: \_\_\_\_\_  
 Address: \_\_\_\_\_ If Renewing \_\_\_\_\_ First \_\_\_\_\_ Middle \_\_\_\_\_ Last \_\_\_\_\_  
 City: \_\_\_\_\_ State: \_\_\_\_\_ Zip: \_\_\_\_\_  
 Phone: \_\_\_\_\_ E-mail: \_\_\_\_\_  
 Signature (required by P.O.): \_\_\_\_\_  
 Type of Membership ☐ Adult, 1 Year: \$30 ☐ Adult, 2 Years: \$58 ☐ Adult, 3 Years: \$86  
☐ Junior (Under 18 years) \$17 ☐ Family, 1 Year: \$35 (Adult + \$5, One Set Journals) How Many Cards? \_\_\_\_\_  
☐ Canada & Mexico: \$35 ☐ Other / Foreign: \$38 (surface) Checks must be drawn on a US bank or international money order  
 Payment Method: ☐ Check ☐ Money Order  
 Chapter Affiliation, (if any): \_\_\_\_\_  
 If Recommended by an IPMS Member, Please List His / Her Name and Member Number:  
 Name: \_\_\_\_\_ IPMS No.: \_\_\_\_\_  
**IPMS/USA**  
 Join or Renew Online at: [www.ipmsusa.org](http://www.ipmsusa.org) PO Box 56023  
 St. Petersburg, FL 33732-6023

# SUPPORT YOUR LOCAL HOBBY SHOPS

Space Available

Space Available

Open  
Tues.-Fri. 12-8  
Sat. 10-6

(401) 737-7111  
www.mailcarhobbies.com



mailcarhob@aol.com  
John F. Reid, Jr.

655 Jefferson Blvd.  
Warwick, RI 02886

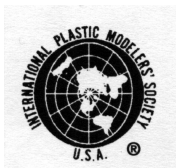
**(508) - 222-3460**

## Hobby Hut

47 Bank Street Rear  
Attleboro, MA 02703

Models - Trains - Paints - Rockets - RC  
- Hobby Supplies -

10-6 Daily      10-5 Sat      Closed Sundays  
- WILL SPECIAL ORDER -



# Battlewagon



**IPMS Bay Colony Historical Modelers**  
**71 Willow Lane**  
**Plainville, MA 02762**